

**1 DOOR TYPES**  
A6.02 SCALE: 1/4"=1'

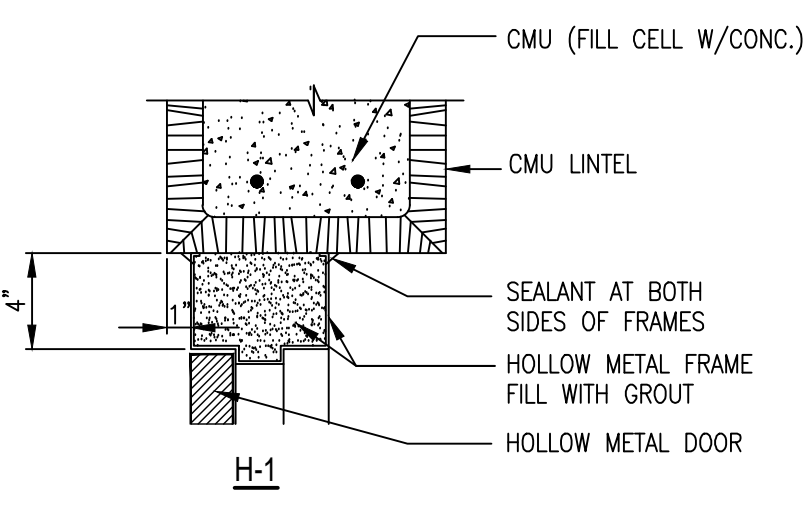
**DOOR SCHEDULE NOTES:**

- REFER TO FOOD LION SPECIFICATIONS & NATIONAL ACCOUNT REFERENCES FOR DOOR MANUFACTURERS.
- NOT USED.
- ALL PREP TRAFFIC DOORS TO RECEIVE "TEAR-DROP" BUMPERS ON BOTH SIDES OF THE DOOR. BUMPERS SUPPLIED BY DOOR MANUFACTURER.
- NEW TRAFFIC DOORS TO RECEIVE GASKETS AROUND DOOR PERIMETER. GASKETS SUPPLIED BY DOOR MANUFACTURER. (REFER TO SCOPE OF WORK)
- STORE NUMBER TO BE STENCILED (4" HIGH) TO TRUCK DRIVERS (DSD) DOOR IN PAINT COLOR CONTRASTING TO COLOR OF DOOR.
- DOOR SCOPE TO BE PART NO. 50101 FROM WARNOK-HERSEY HARDWARE DISTRIBUTION (800) 632-1324.
- PROVIDE 1/4" WIRE SAFETY GLASS PER NCSBC-2406.4.1 IN HALF GLASS DOOR WINDOW-APPLICABLE TO ALL OFFICES.
- ALL NEW EXTERIOR DOORS & WINDOWS TO COMPLY W/ NCEBC 811.1.1 GENERAL CONTRACTOR SHALL INSTALL KICKPLATES ON BOTH SIDES OF ALL SOLID CORE WOOD & HOLLOW METAL DOORS. (EXCEPTION- EXTERIOR SIDE EXTERIOR DOORS). REPLACE MISSING AND DAMAGED KICKPLATES.
- THE GENERAL CONTRACTOR SHALL SAND, CLEAN, AND REPAINT ALL EXISTING SOLID CORE WOOD & HOLLOW METAL DOORS & FRAMES SCHEDULED FOR REUSE. THE GENERAL CONTRACTOR SHALL FURNISH NEW HOLLOW METAL FRAMES FOR THOSE DOORS TO BE RELOCATED. DOOR HARDWARE TO BE BROUGHT UP TO CURRENT FOOD LION STANDARDS. ALL EXTERIOR DOOR SWEEPS WILL BE REPLACED WITH PEMKO #18100CN884. CONTRACTOR SHALL & ORDER NEW DELAY EGRESS STICKERS FROM BA HOF ONCE DOORS REPAINTED.
- GENERAL CONTRACTOR SHALL INSTALL NEW DOOR SILENCERS ON ALL DOORS (AFTER PAINTING) AND COMMERCIAL GRADE KICK DOWNS ON ALL INTERIOR HOLLOW METAL DOORS (EXCEPT WORKROOM WITH SAFES).
- THE GENERAL CONTRACTOR SHALL VERIFY CONDITION OF ALL DOORS AND COORDINATE THE REUSE WITH THE FOOD LION CONSTRUCTION MANAGER.
- DOCK DOORS, SEALS, DOCK LEVELER AND EQUIPMENT SHALL BE ORDERED FROM OVERHEAD DOOR AS PER FOOD LION SPECIFICATIONS. REFER TO NATIONAL ACCOUNT REFERENCE INFORMATION. SCOPE OF WORK, & COORDINATE W/ FOOD LION CONSTRUCTION MANAGER.
- TRAFFIC DOORS TO BE ORDERED FROM CHASE DURAS AT HEFCO. REFER TO NATIONAL ACCOUNT INFORMATION.
- HOLLOW METAL DOORS, FRAMES AND HARDWARE SHALL BE ORDERED FROM B.A. HOFF. GENERAL CONTRACTOR MUST ORDER NEW DELAY EGRESS STICKERS FROM B.A. HOFF ONCE THE DOORS ARE REPAINTED. REFER TO NATIONAL ACCOUNT INFORMATION.
- ALL JAMB GUARDS, MISC ALUMINUM, STAINLESS STEEL, ETC. BREAK METAL ITEMS SHALL BE FIELD VERIFIED, FABRICATED AND INSTALLED GENERAL CONTRACTOR.
- GENERAL CONTRACTOR SHALL REPLACE MISSING OR DAMAGED WEATHER-STRIPPING, SWEEPS & NEW STYLE CARPET THRESHOLDS ON ALL EXTERIOR DOORS (INCLUDING AUTOMATIC DOORS). ROLL-UP DOORS 5-3/8" BRUSH GASKET-MFR/MODEL #HD15642 BY NATIONAL GUARD.
- G.C. TO ADJUST INTERIOR DOOR CLOSERS SO THAT NO MORE THAN 5 LBS OF FORCE IS REQUIRED TO OPERATE AND SO THAT DOORS GO FROM 90 DEGREE OPEN TO 12 DEGREE OPEN IN 5 SECONDS MIN.
- E-COMMERCE-DOOR REQUIREMENTS
  - ALUMINUM/GLASS-MEDIUM-STYLE-DOOR WITH 10" BOTTOM RAIL, 6" MDRAL @ 36" AFF BY GENERAL CONTRACTOR.
  - 4" DEEP ALUMINUM FRAME TO MATCH STOREFRONT FINISH.
  - GLASS TO BE 1" INSULATED CLEAR TEMPERED GLASS.
  - GENERAL CONTRACTOR WILL PROVIDE AND INSTALL:
    - VON DUPRIN PUSH BAR
    - JUNCTION BOXES
    - DOOR, DOOR FRAME, GLASS, DOOR HARDWARE
    - DOOR MANUFACTURER PROVIDED OFFSET HINGES, OVERHEAD DOOR CLOSER (90 DEGREE SET), EXTERIOR "D" STYLE PULL HANDLE, ALUMINUM THRESHOLD, DOOR SWEEP AND WEATHER STRIPPING.
- FOOD LION ASSET PROTECTION PROVIDES/INSTALLS FOOT READER (INTERIOR/EXTERIOR) OF BUILDING
  - ELECTRIC STRIKER PLATE AND KEY FOOT LOCK RELEASES ON INTERIOR AND EXTERIOR OF BUILDING
  - GLASS-BREAK / MOTION SENSORS TO BE EVALUATED BY FOOD LION ASSET PROTECTION TEAM
- EXTERIOR SIDE OF DOOR/FRAME TO BE PREPPED FOR PAINT AND REPAINTED TO MATCH EXISTING COLOR.

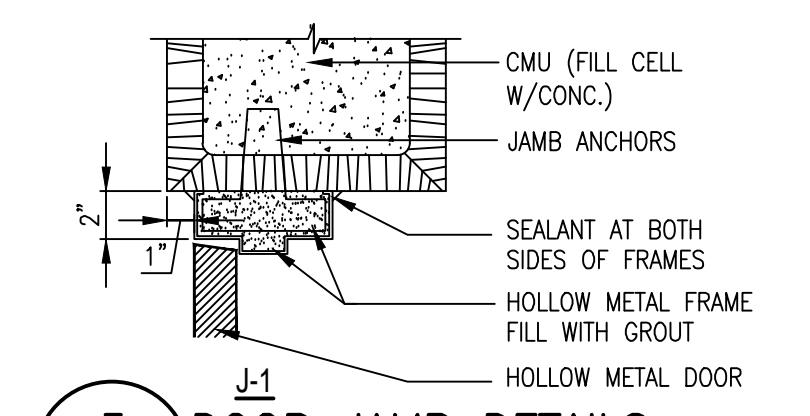
**DOOR SCHEDULE**

(NO) INDICATES AN EXISTING DOOR TO REMAIN

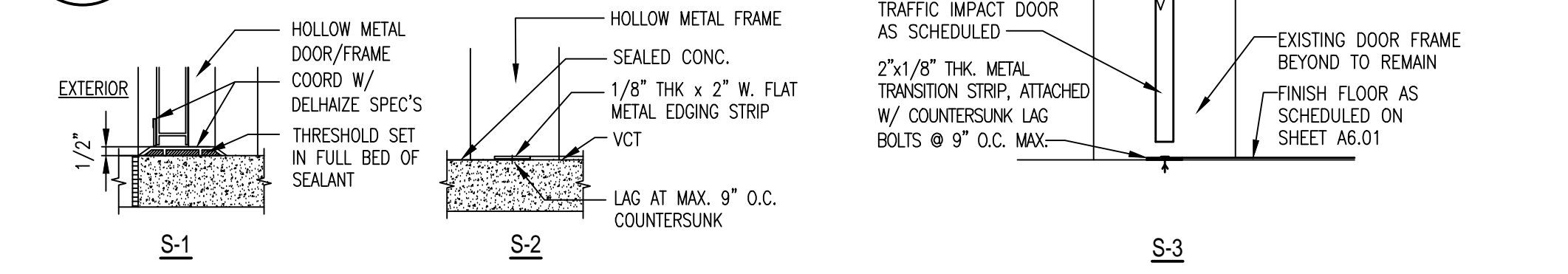
(NO)	SIZE	LOCATION	RM.	HRDW.	TYP E	FRAME	HEAD	JAMB	SILL	FRAME COLOR	DOOR FINISH	NOTES AND COMMENTS
100A*	PR-2'-6"x6'-10"x1 3/4"	EXIST VESTIBULE	100	HW-01	1	EXIST ALUM	EXIST	EXIST	EXIST	FACTORY	FACTORY	EXISTING MOTION DETECTORS ON BOTH SIDES - NEW DETECTORS TO BE SUPPLIED BY ASSA ABLOY ENTRANCE SOLUTIONS 1-609-249-9492 SEE DOOR SCHEDULE NOTE #17.
100B*	PR-2'-6"x6'-10"x1 3/4"	EXIST VESTIBULE	100	HW-01	1	EXIST ALUM	EXIST	EXIST	EXIST	FACTORY	FACTORY	EXISTING MOTION DETECTORS ON BOTH SIDES - NEW DETECTORS TO BE SUPPLIED BY ASSA ABLOY ENTRANCE SOLUTIONS 1-609-249-9492 SEE DOOR SCHEDULE NOTE #17.
101	3'-0"x3'-6"x1" (GATE)	NEW SALES	101	-	5	NEW ALUM	N/A	N/A	-	FACTORY	FACTORY	EXIT DEVICE. SEE E5.01 FOR WIRING.
102*	3'-0"x7'-0"x1 3/4"	EXIST WORK ROOM	102	HW-12	3	EXIST HM	EXIST	EXIST	N/A	P-3(B)	P-3(B)	SEE DOOR SCHEDULE NOTES #9,10,11,12.
103A*	2'-11"x3'-6"x1 3/4"	EXIST DELI / BAKERY PREP	103	-	6	EXIST ALUM	N/A	N/A	S-3	FACTORY	FACTORY	WALL MOUNTED
103B*	2'-9"x3'-6"x1 3/4"	EXIST DELI / BAKERY PREP	103	-	6	EXIST ALUM	N/A	N/A	S-3	FACTORY	FACTORY	WALL MOUNTED
104*	2'-6"x7'-0"x1 3/4"	EXIST DELI / BAKERY CLOSET	104	HW-10	2	EXIST HM	EXIST.	EXIST.	N/A	P-18(B)	P-18(B)	SEE DOOR SCHEDULE NOTES #9,10,11,12.
105*	3'-0"x7'-0"x1 3/4"	EXIST CORRIDOR	105	HW-03	2	EXIST HM	EXIST	EXIST	S-1	INT P-3(B) / EXT TO MATCH EXISTING COLOR	INT P-3(B) / EXT TO MATCH EXISTING COLOR	SEE REMARKS #1&2. SEE DOOR SCHEDULE NOTES #9,11,15
106*	3'-0"x7'-0"x1 3/4"	EXIST MEN'S RESTROOM	106	HW-10A	2	EXIST HM	EXIST	EXIST	EXIST	P-3(B)	P-3(B)	SEE DOOR SCHEDULE NOTES #9,10,11,12,18.
107*	3'-0"x7'-0"x1 3/4"	EXIST WOMEN'S RESTROOM	107	HW-10B	2	EXIST HM	EXIST	EXIST	EXIST	P-3(B)	P-3(B)	SEE DOOR SCHEDULE NOTES #9,10,11,12,18.
108	PR-3'-0"x7'-10"x1"	NEW GROCERY STAGING	108	HW-14	8	EXIST HM	EXIST	EXIST	S-3	P-3(B)	FACTORY	SEE DOOR SCHEDULE NOTES #3,14,16.
110*	3'-0"x7'-0"x1 3/4"	EXIST DEPT. MANAGER'S OFFICE	110	HW-05	4	EXIST HM	EXIST	EXIST	S-2	P-3(B)	P-3(B)	SEE DOOR SCHEDULE NOTES #9,10,11,12. INSTALL NEW WINDOW KIT.
111	3'-0"x7'-0"x1 3/4"	NEW ASSOCIATE'S TRAINING ROOM	111	HW-10	4	NEW HM	H-1	J-1	S-2	P-3(B)	P-3(B)	SEE DOOR SCHEDULE NOTES #9,10,11,12.
112	3'-6"x7'-0"x1 3/4"	NEW LOUNGE	112	HW-10	4	NEW HM	H-1	J-1	S-2	P-3(B)	P-3(B)	SEE DOOR SCHEDULE NOTES #9,10,11,12.
113A*	3'-0"x7'-0"x1 3/4"	EXIST RECEIVING ROOM	113	HW-03	2	EXIST HM	EXIST	EXIST	EXIST	INT P-3(B) / EXT TO MATCH EXISTING COLOR	INT P-3(B) / EXT TO MATCH EXISTING COLOR	SEE REMARKS #1&2. SEE DOOR SCHEDULE NOTES #9,11,15,17,20
113B*	8'-0"x8'-0"x1"	EXIST RECEIVING OVERHEAD	113	HW-07	9	EXIST BENT PLATE	EXIST	EXIST	EXIST	FACTORY	FACTORY	STEEL ROLL-UP DOOR- SEE DOOR SCHEDULE NOTES #13,17
113C*	8'-0"x8'-0"x1"	EXIST RECEIVING OVERHEAD	113	HW-07	9	EXIST BENT PLATE	EXIST	EXIST	EXIST	FACTORY	FACTORY	STEEL ROLL-UP DOOR- SEE DOOR SCHEDULE NOTES #13,17
114*	2'-8"x7'-0"x1 3/4"	EXIST RISER ROOM	114	EXIST	10	EXIST WD	EXIST	EXIST	N/A	-	-	-
117	3'-0"x7'-0"	MODIFY JANITOR'S ROOM	117	-	-	EXIST HM	EXIST	EXIST	-	P-3(B) EPOXY	-	OPENING WITH FRAME ONLY - PATCH & REPAIR DOOR FRAME, INSTALL NEW STRIKE & HINGE FILL PLATES & PREP FOR NEW PAINT.
118A*	PR-3'-0"x7'-0"x1"	EXIST MEAT PREP	118	HW-14	13	EXIST HM	EXIST	EXIST	EXIST	INT P-4 (B) / GROCERY STAGING P-3 (B)	FACTORY	SEE DOOR SCHEDULE NOTES #3,14,16.
118B	3'-6"x7'-0"x1"	NEW MEAT PREP	118	HW-13	12	EXIST HM	EXIST	EXIST	S-3	INT P-4 (B) / SALES P-3 (B)	FACTORY	SEE DOOR SCHEDULE NOTES #3,14,16.
119*	3'-0"x7'-0"x1"	EXIST MEAT OFFICE	119	HW-13	14	EXIST HM	EXIST	EXIST	N/A	P-4(B)	FACTORY	SEE DOOR SCHEDULE NOTES #3,14,16.
120A*	PR-3'-0"x7'-0"x1"	EXIST PRODUCE PREP	120	HW-14	15	EXIST HM	EXIST	EXIST	N/A	INT P-4 (B) / GROCERY STAGING P-3 (B)	FACTORY	SEE DOOR SCHEDULE NOTES #3,14,16.
120B	PR-3'-0"x7'-0"x1"	NEW PRODUCE PREP	120	HW-14	11	EXIST HM	EXIST	EXIST	S-3	INT P-4 (B) / SALES P-3 (B)	FACTORY	SEE DOOR SCHEDULE NOTES #3,14,16.
120C*	3'-6"x7'-0"x1 3/4"	EXIST PRODUCE PREP	120	HW-03	2	EXIST HM	EXIST	EXIST	N/A	INT P-4(B) / EXT TO MATCH EXISTING COLOR	INT P-4(B) / EXT TO MATCH EXISTING COLOR	SEE REMARKS #1&2. SEE DOOR SCHEDULE NOTES #9,11,15
121*	2'-9"x7'-0"x1 3/4"	EXIST MECHANICAL ROOM	121	EXIST	-	EXIST	EXIST	EXIST	EXIST	FACTORY	FACTORY	-
201*	3'-6"x7'-0"x1 3/4"	EXIST MECHANICAL ROOM	201	EXIST	2	EXIST HM	EXIST	EXIST	N/A	P-3(B)	P-3(B)	SEE DOOR SCHEDULE NOTES #9,10,11,12.
202*	3'-0"x7'-0"x1 3/4"	EXIST OFFICE	202	EXIST	4	EXIST HM	EXIST	EXIST	N/A	P-3(B)	P-3(B)	SEE DOOR SCHEDULE NOTES #9,10,11,12.



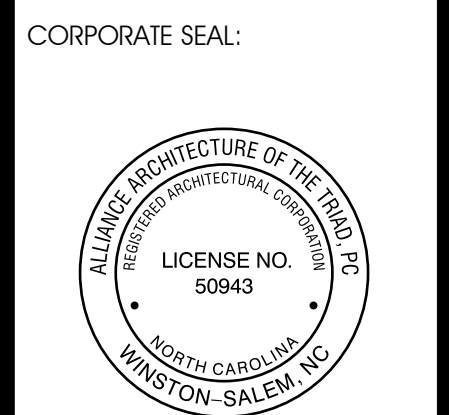
**2 DOOR HEAD DETAILS**  
A6.02 SCALE: 1/4"=1'



**3 DOOR JAMB DETAILS**  
A6.02 SCALE: 1/4"=1'



**4 DOOR SILL DETAILS**  
A6.02 SCALE: 1/4"=1'



REVISIONS

NO	DATE	REMARKS
1	06/06/00	COMMENTS



**FOOD LION**  
2110 Executive Drive, Salisbury, NC 28145  
Tel: 704.282.2626  
foodlion.com  
Food Lion is an AHOLD DELHAIZE company.

**FOOD LION REMODEL STORE #0230**  
1320 SHELBY ROAD  
KINGS MOUNTAIN, NC 28086

PROJECT NO: 0230FLMK24  
DATE: 11/22/2024  
20 OF 46  
**A6.02**  
DOOR & WINDOW FINISH SCHEDULES  
CHECKED: A.J. DRAWN: VFS